

---

# Start of Schools Update

---

Assistant  
Superintendent/Principal  
David Rodriguez 8/26/2021

---

---

# Campus Culture

Before school started our Leadership students were hard at work!



# Campus Culture

Before school started our Leadership students were hard at work!



# Campus Culture

Before school started our Leadership students were hard at work!



# Week of Welcome



# 5 Days of Staff Professional Development (PD)

LGA started the year with 5 days of staff PD focused around our school wide initiatives ...

## LEROY GREENE ACADEMY

### Areas of Focus

**Purpose • Results • Innovation • Determination • Empathy**

#### Innovators Toolbox

- Thinking Visually
- Pitching
- Collaborating
- Analyzing Text & Data
- Prototyping
- Critiquing
- Ideating
- Perseverance

#### Restorative Justice (RJ)

- Seeking empowerment & satisfaction
- Reparation of harm caused
- Community Involvement
- Re-establishment of existing human relationships

#### Positive Behavior Intervention & Support (PBIS)

- Data for decision making
- measurable outcomes supported & evaluated by data
- practices with evidence for achievable outcomes
- Efficient & Effective systems that support implementation

#### Advancement Via Individual Determination (AVID)

- Organization
- Focused Note-taking:
  - 5 phases
  - annotations
  - understanding the why
  - rate of forgetting
- Writing to Learn
  - Marking the Text
- Costa's level of thinking (DOK/Rigor)
  - 3 levels of thinking: Input, Processing & Output



**LONG TERM GOALS:  
INCREASE STUDENT ENGAGEMENT,  
EMPOWERMENT & ACADEMIC ACHIEVEMENT**

# Self-Care: YOU are a Priority

## Self-Care for Educators



Connect with uplifting colleagues



Do physical activities you enjoy



Take a break when you need one



Use positive self-talk



Go for a walk or spend time outside



Read a good book (just for you)



Plan an activity to look forward to



Spend time with friends and family



Leave work at school for the night or weekend



Spend less time on social media



Bring healthy snacks and meals



Be comfortable saying "no" to more obligations



# Trauma Informed Practices

Trauma Informed presented by Community Resilience Initiative

"emphasis on resilience through exposure to an understanding of the ACE Study and the neuroscience on toxic stress and brain architecture."

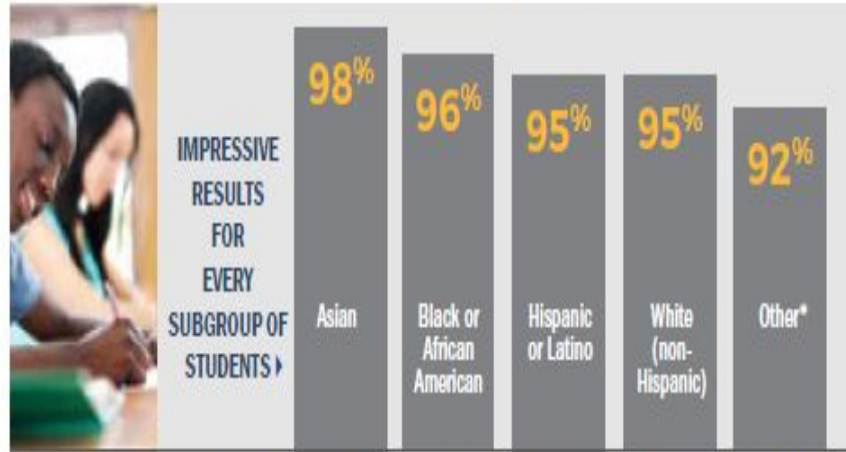
"Ultimately, this work is a social movement and a public health framework, and when we know how to build human capital collectively, we create stronger communities that can thrive the impact of risk better... We have learned that the KISS is a framework people understand, and it is aligned with our scaffolding concept."

- Through this KISS framework. Knowledge, Insight, Strategies, and Structures.

# Intro to AVID

- Advancement Via Individual Determination
- AVID's mission is to close the opportunity gap by preparing all students for college readiness and success in a global society.

**AVID Class of 2020:** 95% completed 4-year college entrance requirements



\*Other includes American Indian, Alaska Native, Native Hawaiian, Pacific Islander, two or more races, and students who declined to state.  
AVID. (2020). AVID senior data collection [Electronic Database].

# The How



- Increase lesson rigor
- Scaffold student learning
- Maximize student engagement and retention of content

WICOR is an acronym for **Writing, Inquiry, Collaboration, Organization, and Reading** which proves a learning model that we will use to guide students in comprehending concepts and articulating ideas at increasingly complex levels.

# Restorative Justice in Education

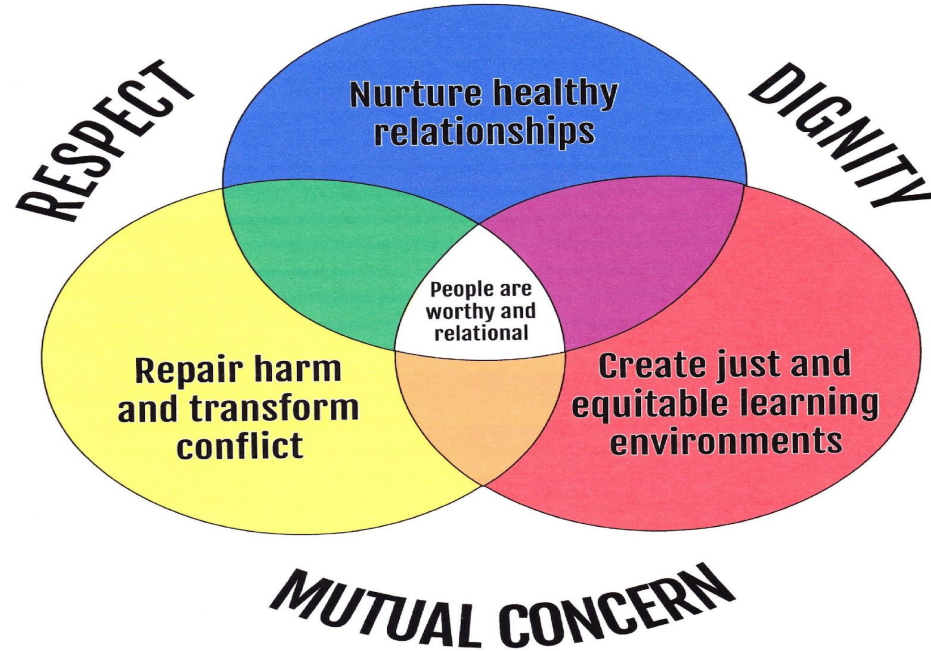
## August 2021



“Restorative Justice promotes values and principles that use inclusive, collaborative approaches for being in community. These approaches validate the experiences and needs of everyone within the community, particularly those who have been marginalized, oppressed or harmed. These approaches allow us to act and respond in ways that are healing rather than alienating or coercive.”

Lorraine Stutzman Amstutz and Judy H. Mullet, 2005  
*The Little Book of Restorative Discipline (p15)*

# Restorative Justice in Education



*From Restorative Justice in Education by Katherine Evans and Dorothy Vaandering / Good Books, New York*

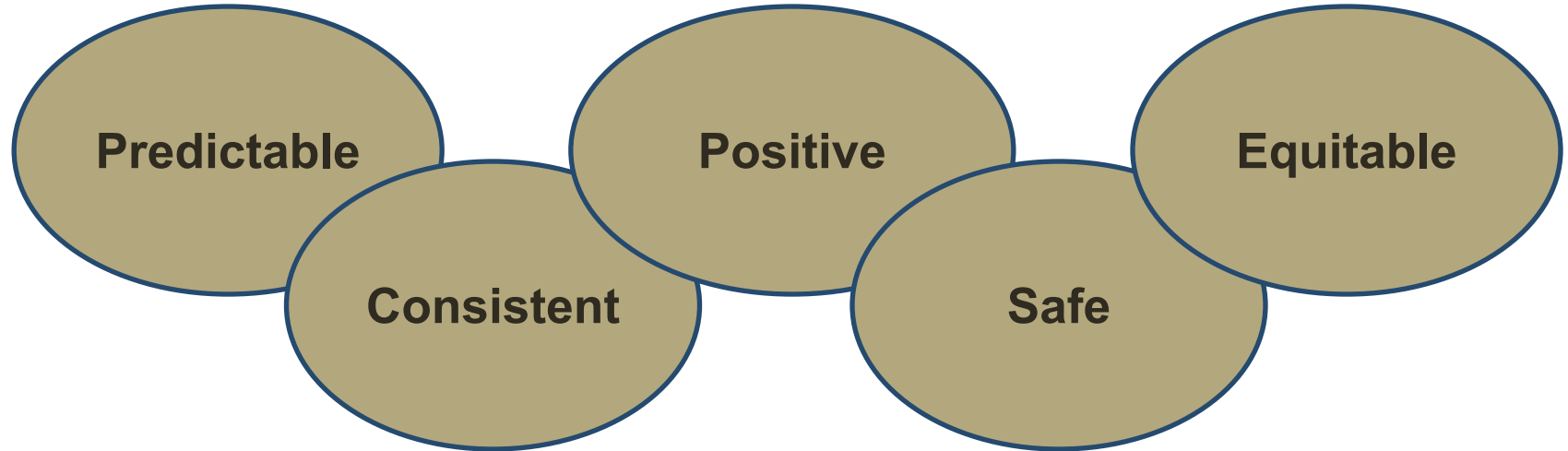
# Positive Behavior Interventions & Supports (PBIS)



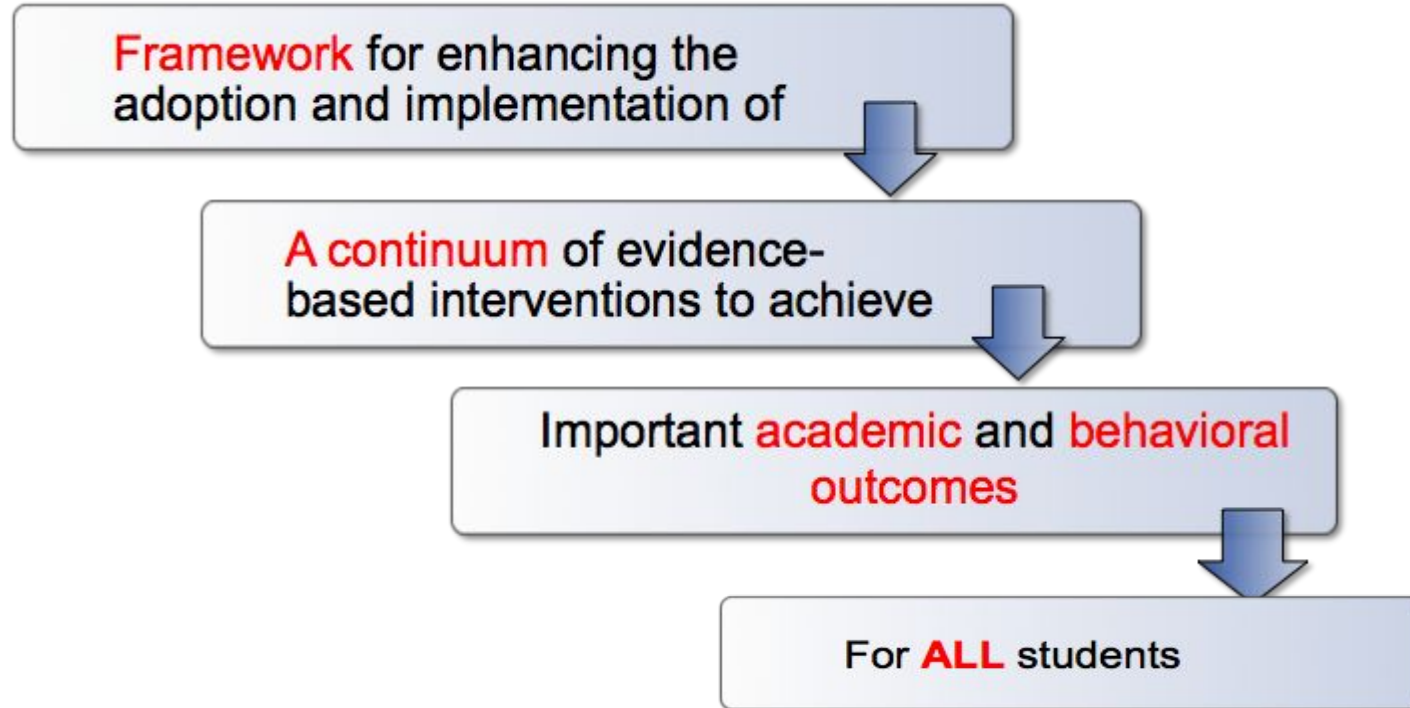
PBIS is a framework not a program, it fits the needs of individual school sites and what is relevant for the needs and culture of their school community. the framework allows for scaffolding of interventions for students based on need, using data to make effective decisions (what works for one student or a group of students may not work for all).

# What is the purpose of PBIS?

...to make schools more **effective** and **equitable** learning environments for ALL students.



# Positive Behavior Interventions & Supports (PBIS)



# Year Long PD

Throughout the year our school-wide professional development will center around our initiatives:

- Innovators Toolbox
- AVID
- Restorative Justice
- Positive Intervention Behavior & Support (PBIS)

All of these will encompass the overall district's areas of focus:

- Diversity, Equity, and Inclusion
- Trauma Informed Practices
- Literacy